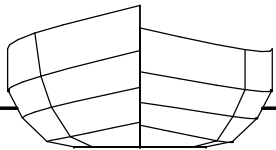
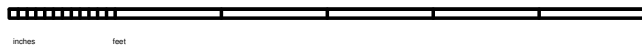
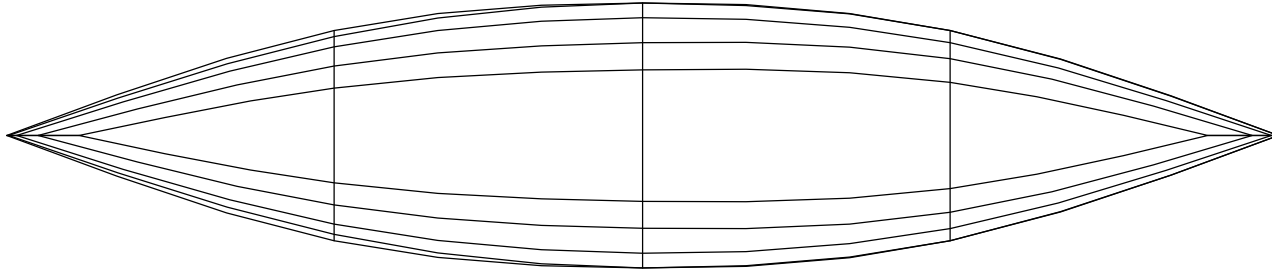


Cinderella

144 by 30in flat-bottomed, round-sided, elegant but easy to build canoe

This canoe is intended for stitch and glue construction using 3/8in marine ply epoxy and tape on the inside and either epoxy and tape or glass cloth on the outside. This is an experimental design drawn up by an untrained amateur. The Designer accepts no liability for any loss or damage sustained during construction or use. Builders may use these plans to construct small numbers of boats freely for their own use. Commercial manufacturers must ask the designer to negotiate permission. Copyright Gavin Aikin, Tunbridge Wells, Kent April 2005 email gmatkin@clara.net



Gap filled at bows and stern using either gunwale or inwale material, cut and tried to fit neatly (it will be visible)

Hull - 3/8in marine ply
 Gunwale - 3/4in material
 Gapped inwale - 3/4in (or same as inwale and gunwale)
 Inwale - 3/4in pine or spruce

Shoulder carrier - 1.5 by 1.5 (may be larger to taste) in pine or spruce shaped for carrying comfort and clamped and glued under inwale

Gapped inwale blocks at 11.5in centres

Fillet made from doubled hull material, cut and shaped to fit under inwale, then clamped and glued into place

